



Performance Report for: <https://mcgrathcoaches.com/>

Report generated: Thu, Nov 1, 2018, 5:46 AM -0700
 Test Server Region: Vancouver, Canada
 Using: Chrome (Desktop) 62.0.3202.94, PageSpeed 1.15-gt1, YSlow 3.1.8

| | | | | |
|-------------------------------------|---------------------------------|------------------------------------|------------------------------------|-------------------------|
| PageSpeed Score A (92%) ^ | YSlow Score B (82%) ^ | Fully Loaded Time 3.3s ^ | Total Page Size 1.76MB ^ | Requests 36 ^ |
|-------------------------------------|---------------------------------|------------------------------------|------------------------------------|-------------------------|

Top 5 Priority Issues

| | | | | |
|--|--------|----------------|--------|------|
| Defer parsing of JavaScript | C (71) | AVG SCORE: 70% | JS | HIGH |
| Minify JavaScript | B (85) | AVG SCORE: 88% | JS | HIGH |
| Optimize the order of styles and scripts | A (92) | AVG SCORE: 94% | CSS/JS | HIGH |
| Enable gzip compression | A (94) | AVG SCORE: 85% | SERVER | HIGH |
| Minify CSS | A (96) | AVG SCORE: 95% | CSS | HIGH |

How does this affect me?

Studies show that users leave a site if it hasn't loaded in 4 seconds; keep your users happy and engaged by providing a fast performing website.

As if you didn't need more incentive, **Google has announced that they are using page speed in their ranking algorithm.**

About GTmetrix

We can help you develop a faster, more efficient, and all-around improved website experience for your users. We use Google PageSpeed and Yahoo! YSlow to grade your site's performance and provide actionable recommendations to fix these issues.

About the Developer



GTmetrix is developed by the good folks at **GT.net**, a Vancouver-based performance hosting company with over 22 years experience in web technology.

<https://gt.net/>

What do these grades mean?

This report is an analysis of your site with Google and Yahoo!'s metrics for how to best develop a site for optimized speed. The **grades you see represent** how well the scanned URL adheres to those rules.

Lower grades (C or lower) mean that the page can stand to be faster using better practices and optimizing your settings.

What's in this report?

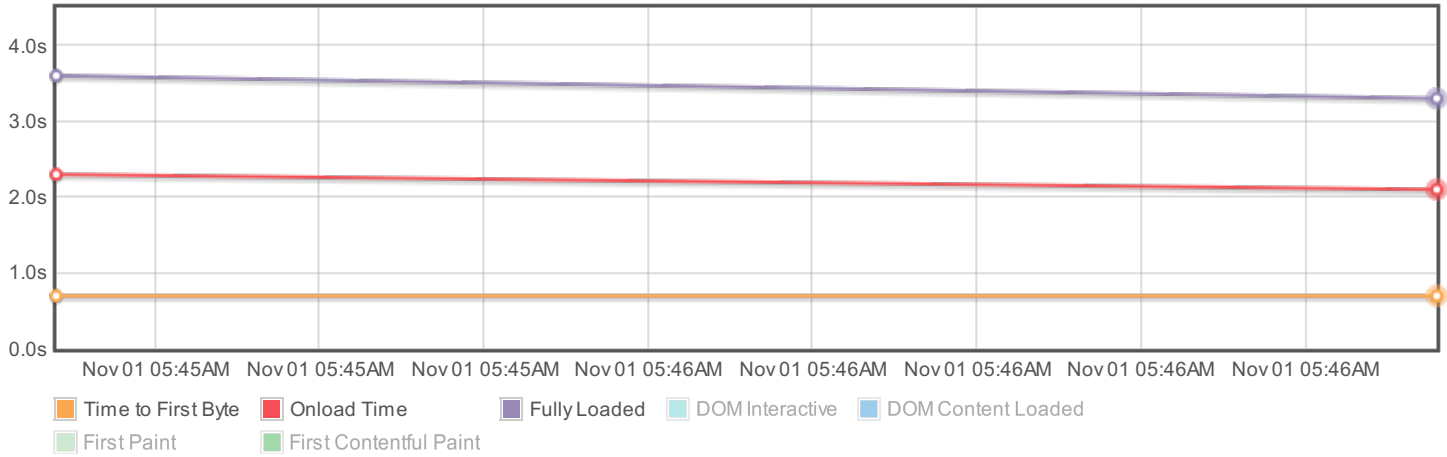
This report covers basic to technical analyses on your page. It is categorized under many headings:

- **Executive:** Overall score information and Priority Issues
- **History:** Graphed history of past performance
- **Waterfall:** Graph of your site's loading timeline
- **Technical:** In-depth PageSpeed & YSlow information

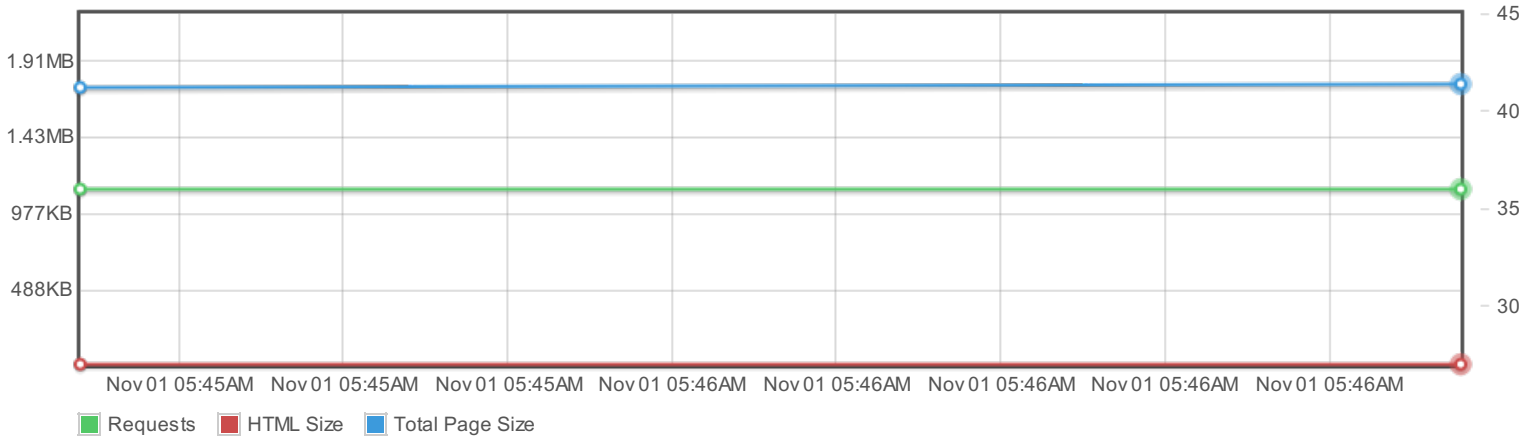
These will provide you with a snapshot of your performance.

History

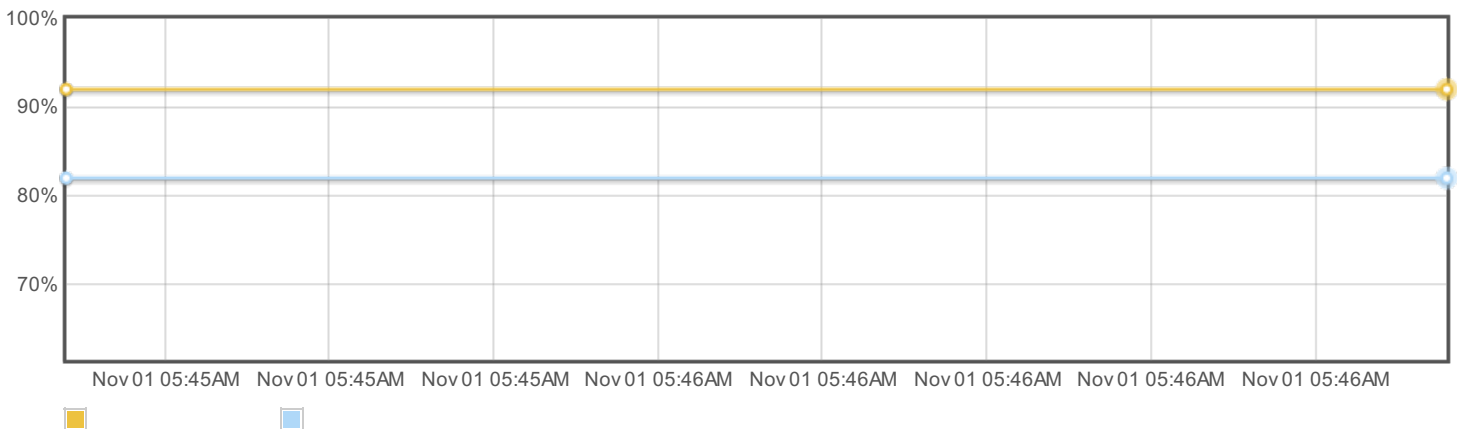
Page load times



Page sizes and request counts



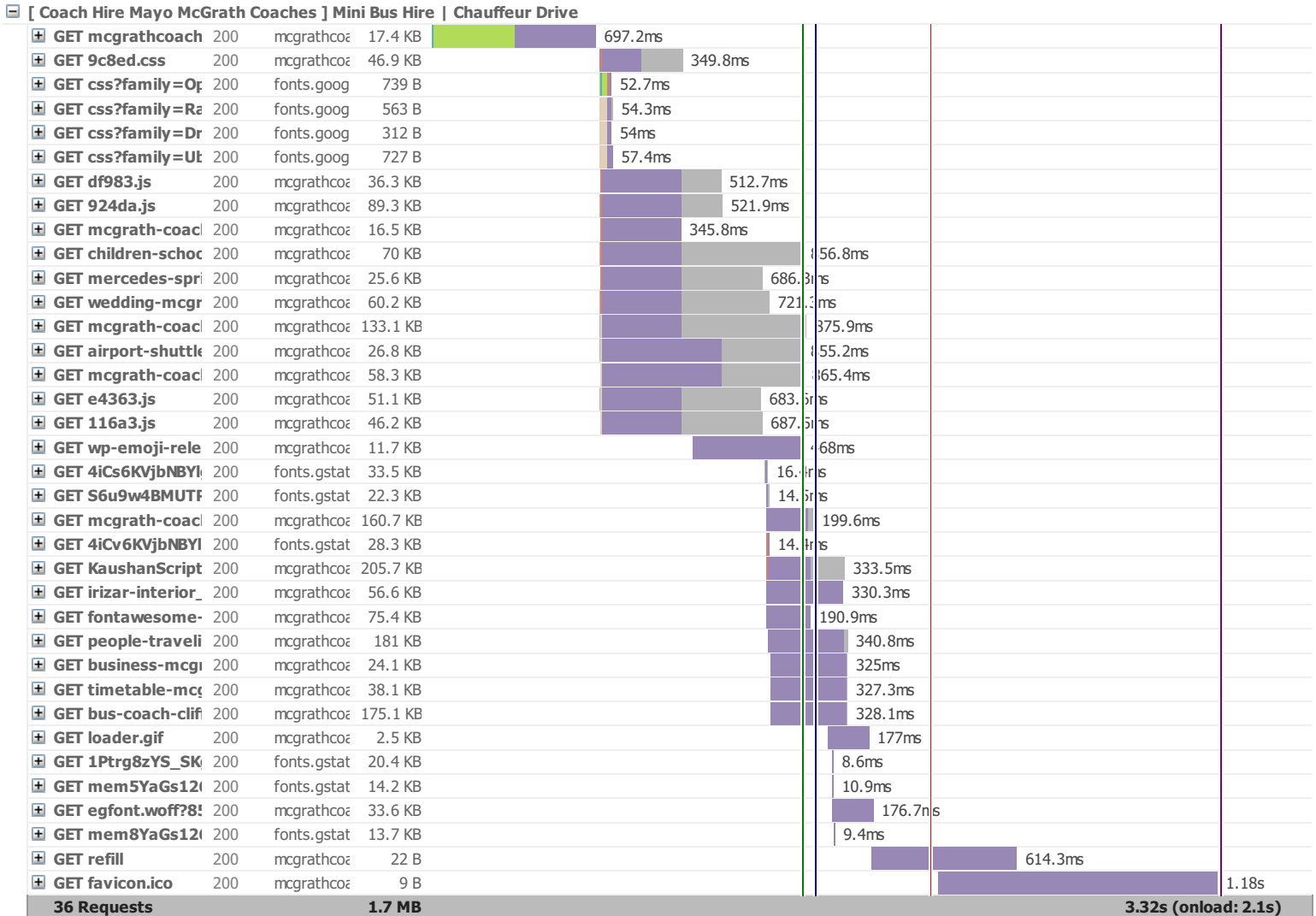
PageSpeed and YSlow scores



Page 3 of 7

Waterfall Chart

The waterfall chart displays the loading behaviour of your site in your selected browser. It can be used to discover simple issues such as 404's or more complex issues such as external resources blocking page rendering.



PageSpeed Recommendations

| RECOMMENDATION | GRADE | RELATIVE | TYPE | PRIORITY |
|--|---------|-------------------|---------|----------|
| Defer parsing of JavaScript | C (71) | ◆ AVG SCORE: 70% | JS | HIGH |
| Minify JavaScript | B (85) | ◆ AVG SCORE: 88% | JS | HIGH |
| Optimize the order of styles and scripts | A (92) | ◆ AVG SCORE: 94% | CSS/JS | HIGH |
| Enable gzip compression | A (94) | ▲ AVG SCORE: 85% | SERVER | HIGH |
| Minify CSS | A (96) | ◆ AVG SCORE: 95% | CSS | HIGH |
| Leverage browser caching | A (96) | ▲ AVG SCORE: 60% | SERVER | HIGH |
| Specify a cache validator | A (96) | ◆ AVG SCORE: 94% | SERVER | HIGH |
| Minify HTML | A (99) | ◆ AVG SCORE: 98% | CONTENT | LOW |
| Specify image dimensions | A (99) | ◆ AVG SCORE: 98% | IMAGES | MEDIUM |
| Avoid bad requests | A (100) | ◆ AVG SCORE: 98% | CONTENT | HIGH |
| Avoid landing page redirects | A (100) | ◆ AVG SCORE: 98% | SERVER | HIGH |
| Enable Keep-Alive | A (100) | ◆ AVG SCORE: 97% | SERVER | HIGH |
| Inline small CSS | A (100) | ◆ AVG SCORE: 96% | CSS | HIGH |
| Inline small JavaScript | A (100) | ◆ AVG SCORE: 95% | JS | HIGH |
| Minimize redirects | A (100) | ▲ AVG SCORE: 89% | CONTENT | HIGH |
| Minimize request size | A (100) | ◆ AVG SCORE: 96% | CONTENT | HIGH |
| Optimize images | A (100) | ▲ AVG SCORE: 70% | IMAGES | HIGH |
| Put CSS in the document head | A (100) | ◆ AVG SCORE: 100% | CSS | HIGH |
| Remove query strings from static resources | A (98) | ▲ AVG SCORE: 88% | CONTENT | LOW |
| Serve resources from a consistent URL | A (100) | ▲ AVG SCORE: 89% | CONTENT | HIGH |
| Serve scaled images | A (100) | ▲ AVG SCORE: 73% | IMAGES | HIGH |
| Combine images using CSS sprites | A (100) | ▲ AVG SCORE: 90% | IMAGES | HIGH |
| Avoid CSS @import | A (100) | ◆ AVG SCORE: 98% | CSS | MEDIUM |
| Prefer asynchronous resources | A (100) | ◆ AVG SCORE: 100% | JS | MEDIUM |
| Specify a Vary: Accept-Encoding header | A (99) | ◆ AVG SCORE: 96% | SERVER | LOW |
| Specify a character set early | A (100) | ◆ AVG SCORE: 100% | CONTENT | MEDIUM |
| Avoid a character set in the meta tag | A (100) | ◆ AVG SCORE: 100% | CONTENT | LOW |

YSlow Recommendations

| RECOMMENDATION | GRADE | RELATIVE | TYPE | PRIORITY |
|--|---------|-------------------|---------|----------|
| Use a Content Delivery Network (CDN) | F (0) | ▼ AVG SCORE: 21% | SERVER | MEDIUM |
| Add Expires headers | E (56) | ▲ AVG SCORE: 26% | SERVER | HIGH |
| Make fewer HTTP requests | B (80) | ▲ AVG SCORE: 31% | CONTENT | HIGH |
| Compress components with gzip | B (89) | ◆ AVG SCORE: 86% | SERVER | HIGH |
| Minify JavaScript and CSS | A (90) | ▲ AVG SCORE: 71% | CSS/JS | MEDIUM |
| Avoid URL redirects | A (100) | ▲ AVG SCORE: 88% | CONTENT | MEDIUM |
| Make AJAX cacheable | A (100) | ◆ AVG SCORE: 100% | JS | MEDIUM |
| Remove duplicate JavaScript and CSS | A (100) | ◆ AVG SCORE: 100% | CSS/JS | MEDIUM |
| Avoid AlphasLoader filter | A (100) | ◆ AVG SCORE: 99% | CSS | MEDIUM |
| Avoid HTTP 404 (Not Found) error | A (100) | ◆ AVG SCORE: 98% | CONTENT | MEDIUM |
| Reduce the number of DOM elements | A (100) | ▲ AVG SCORE: 91% | CONTENT | LOW |
| Use cookie-free domains | A (100) | ▲ AVG SCORE: 51% | COOKIE | LOW |
| Use GET for AJAX requests | A (100) | ◆ AVG SCORE: 100% | JS | LOW |
| Avoid CSS expressions | A (100) | ◆ AVG SCORE: 99% | CSS | LOW |
| Reduce DNS lookups | A (100) | ▲ AVG SCORE: 68% | CONTENT | LOW |
| Reduce cookie size | A (100) | ◆ AVG SCORE: 100% | COOKIE | LOW |
| Make favicon small and cacheable | A (100) | ◆ AVG SCORE: 100% | IMAGES | LOW |
| Configure entity tags (ETags) | A (100) | ▲ AVG SCORE: 92% | SERVER | LOW |
| Make JavaScript and CSS external | (n/a) | | CSS/JS | MEDIUM |

